

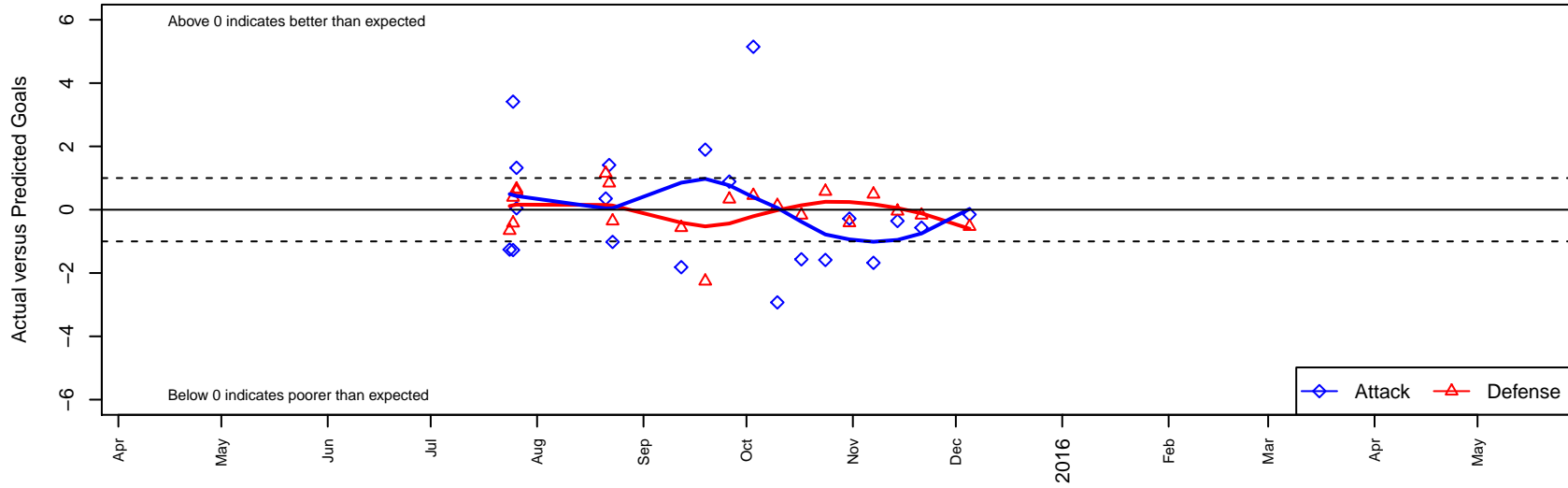
NSC Breakers G04

North Shore SC
 Woodinville, WA
 G04 total strength=425
 attack=0.27 defense=0.27
 fall league = NPSL Div 2 U11

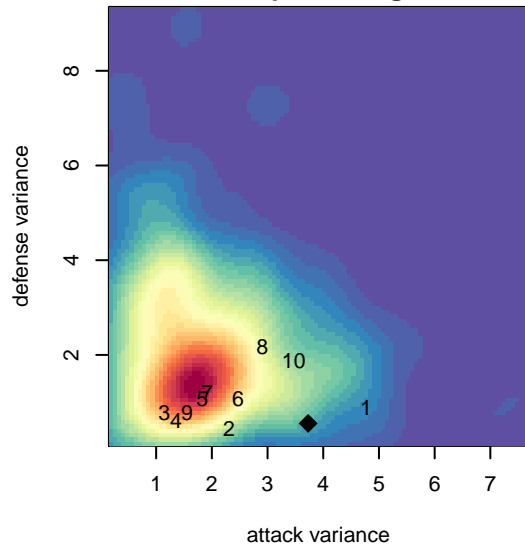
alt names used:
 NSC Breakers
 NSC G04 Breakers
 NSC GU11 Breakers

Venues played:
 2015 Crossfire Select GU11 Silver
 2015 Xtreme Cup GU11 Gold
 2015 NPSL Division 2 U11

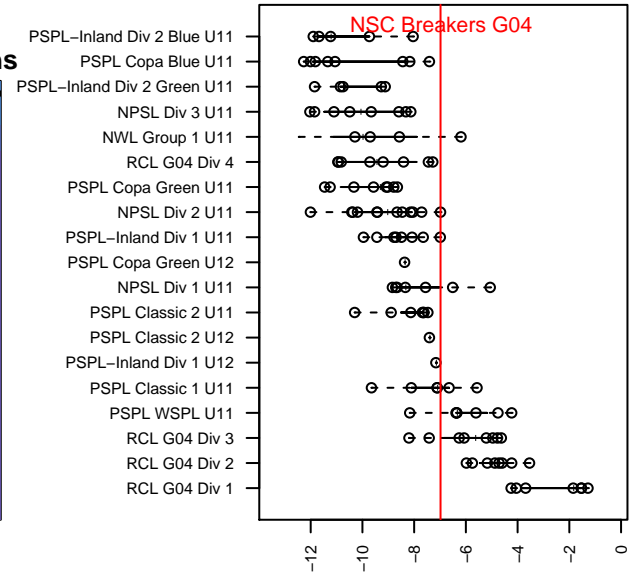
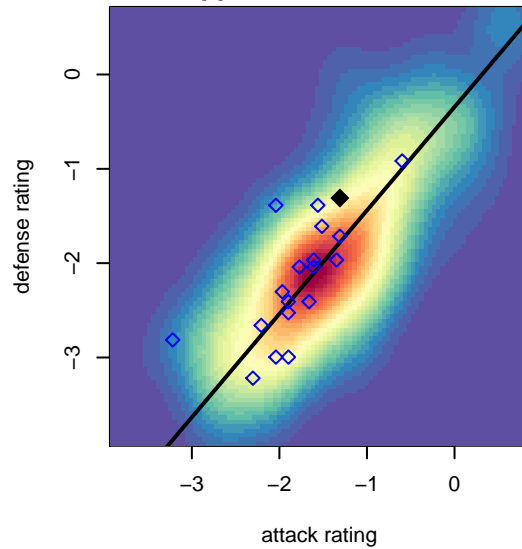
NSC Breakers G04
 Dots are actual minus expected GF (blue circles) and GA (red triangles).
 Blue line is smoothed change in attack strength. Red is smoothed change in defense strength.



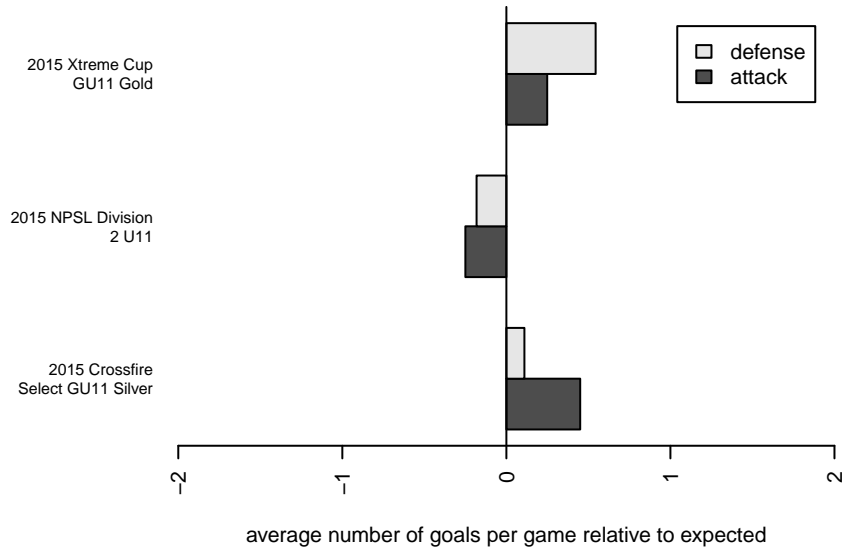
**attack and defense variance (black dot)
relative to other teams
and top 10 in region**



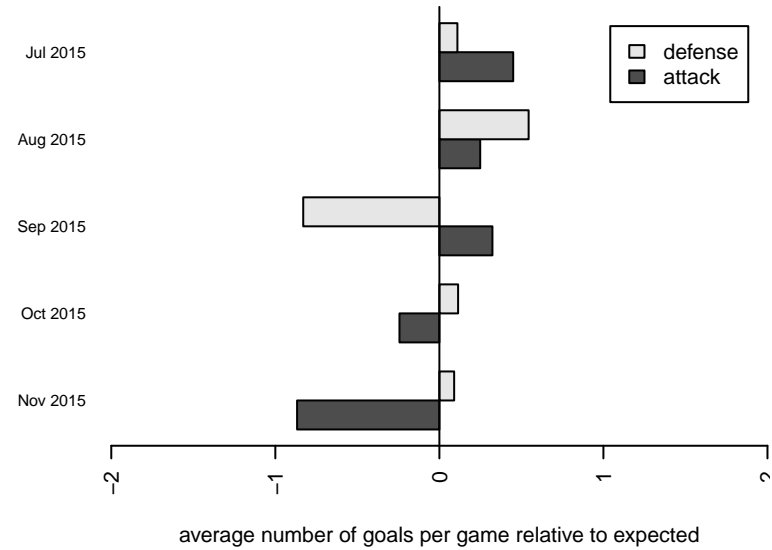
**attack and defense rating
relative to others at age
and all opponents in last 13 months**



Performance relative to 13 month average



Performance relative to 13 month average



| date | home | | away | | venue | pred.home | pred.away |
|------------|-----------------------------|----|-----------------------------------|---|-----------------------------------|-----------|-----------|
| 2015-12-05 | NSC Breakers G04 | 1 | FWFC Boom G04 | 1 | 2015 NPSL Division 2 U11 | 1.15 | 0.47 |
| 2015-11-21 | NSC Breakers G04 | 1 | Seattle United W Blue G04 | 1 | 2015 NPSL Division 2 U11 | 1.57 | 0.83 |
| 2015-11-14 | NSC Breakers G04 | 2 | PSA Force G04 | 1 | 2015 NPSL Division 2 U11 | 2.36 | 0.95 |
| 2015-11-07 | NSC Fury G04 | 0 | NSC Breakers G04 | 1 | 2015 NPSL Division 2 U11 | 0.49 | 2.68 |
| 2015-10-31 | NSC Breakers G04 | 3 | BIFC Blue G04 | 1 | 2015 NPSL Division 2 U11 | 3.28 | 0.59 |
| 2015-10-24 | NSC Breakers G04 | 1 | Seattle United Shoreline Blue G04 | 0 | 2015 NPSL Division 2 U11 | 2.59 | 0.58 |
| 2015-10-17 | Seattle United W Blue G04 | 1 | NSC Breakers G04 | 0 | 2015 NPSL Division 2 U11 | 0.83 | 1.57 |
| 2015-10-10 | Newport FC Fireboltz G04 | 0 | NSC Breakers G04 | 1 | 2015 NPSL Division 2 U11 | 0.13 | 3.93 |
| 2015-10-03 | NSC Breakers G04 | 10 | Southlake Select Red G04 | 0 | 2015 NPSL Division 2 U11 | 4.85 | 0.45 |
| 2015-09-26 | NSC Breakers G04 | 5 | Crossfire Select Jordan G04 | 0 | 2015 NPSL Division 2 U11 | 4.11 | 0.33 |
| 2015-09-19 | Lake Hills Cougars G04 | 3 | NSC Breakers G04 | 4 | 2015 NPSL Division 2 U11 | 0.74 | 2.10 |
| 2015-09-12 | North Whidbey Islanders G04 | 1 | NSC Breakers G04 | 4 | 2015 NPSL Division 2 U11 | 0.43 | 5.82 |
| 2015-08-23 | ISC Gunners B G04 | 1 | NSC Breakers G04 | 0 | 2015 Xtreme Cup GU11 Gold | 0.64 | 1.02 |
| 2015-08-22 | NSC Breakers G04 | 3 | Kent United Green G04 | 0 | 2015 Xtreme Cup GU11 Gold | 1.59 | 0.84 |
| 2015-08-21 | Lakehills Cougars G04 | 1 | NSC Breakers G04 | 1 | 2015 Xtreme Cup GU11 Gold | 2.15 | 0.65 |
| 2015-07-26 | NSC Breakers G04 | 5 | NK Chaos G04 | 0 | 2015 Crossfire Select GU11 Silver | 3.68 | 0.59 |
| 2015-07-26 | Mukilteo Rush G04 | 0 | NSC Breakers G04 | 2 | 2015 Crossfire Select GU11 Silver | 0.65 | 1.95 |
| 2015-07-25 | Wenatchee FC G04 | 0 | NSC Breakers G04 | 2 | 2015 Crossfire Select GU11 Silver | 0.39 | 3.27 |
| 2015-07-25 | NSC Breakers G04 | 6 | Seattle United Shoreline Blue G04 | 1 | 2015 Crossfire Select GU11 Silver | 2.59 | 0.58 |
| 2015-07-24 | Seattle Celtic Black G04 | 1 | NSC Breakers G04 | 6 | 2015 Crossfire Select GU11 Silver | 0.34 | 7.26 |